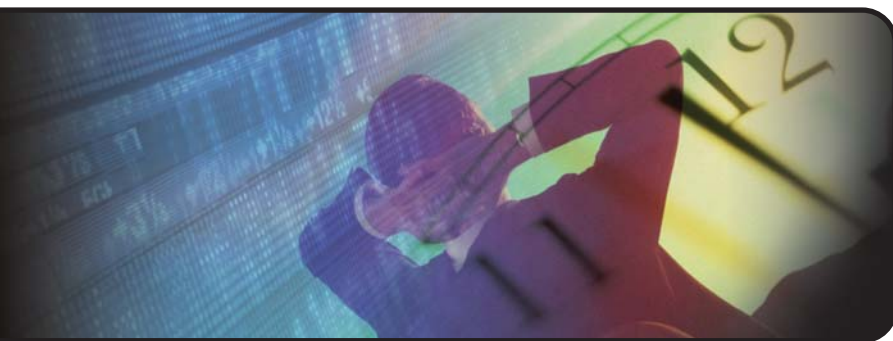


Basket Calculation Engine

» The Exegy Ticker Plant calculates more, faster



Key Features

- » Integrates directly into the Exegy Ticker Plant appliance
- » Maintains ultra-low latency advantage
- » 1,000 baskets with thousands of components
- » North American and European Equity Feeds

First Hardware-Accelerated Basket Calculation Engine

Responding to the needs of the world's leading collocated trading operations, the Exegy Ticker Plant now ships with an ultra-fast Basket Calculation Engine (BCE). Tightly integrated with the Exegy Ticker Plant's low latency market data functions, the BCE creates virtually no added latency.

This all-in-one architecture provides several benefits to the collocated trader, including an ultra-low latency feed, enormous capacity and ultra-low latency calculations.

Ultra-Low-Latency Feed

The BCE uses market data processed by the hardware-accelerated Exegy Ticker Plant. Because the BCE is in the same appliance as the Exegy Ticker Plant, there is no network-related latency when moving the data to a subscribing client.

Case Study

Built with enormous capacity, the Exegy Ticker Plant's BCE allows the user to load up to 1,000 unique portfolios with each list containing up to several thousand constituents. With the Exegy API, the users are setting up portfolios and weights at any time of day. At the beginning of the day, some users may decide to input the constituent recipes for all the equity ETFs trading on U.S. exchanges. Several lists may be portfolios of stocks to buy with a benchmark of beating the day's volume-weighted average price (VWAP) of the portfolio. One portfolio could be the market's VWAP on a static list, calculated throughout the day, and

another portfolio may be the user's trading portfolio with weights changing dynamically as trades are executed throughout the day. In this use case the BCE would report the VWAP delta of the two portfolios.

Ultra-Low-Latency Calculations

The Exegy Ticker Plant BCE performs millions of calculations per second to provide this critical new functionality without adding to the latency of the ticker plant. The BCE calculates several net asset values (NAV) for each portfolio — NAV at last sale, NAV at bid, NAV at bid less a penny, NAV at offer, NAV at offer plus a penny, as well as deltas to the benchmark. The user subscribes to one or all of these through the Exegy API.

The Exegy Ticker Plant BCE is changing the way traders deploy colocated strategies in the index/ETF arbitrage business. For example, an Exegy Ticker Plant at Weehawken is now also ingesting feeds from Secaucus, Carteret and Chicago. The ability to calculate the NAV of indices in multiple markets, while monitoring the related futures and options all in the same ticker plant, is a clear competitive advantage for the colocated trader.

Built to extend the low latency and high capacity characteristics of the Exegy Ticker Plant, the new BCE is a leading indicator of where the most advanced ticker plant technology is headed.

Copyright © 2010 Exegy Incorporated. All Rights Reserved. This document is a proprietary work of Exegy Incorporated and is distributed under an Exegy Incorporated license and is subject to its limitations. Except as set forth in the license, this document may not be copied, distributed, sold, bought, traded or posted on the Internet. All license restrictions, warranty limitations and limitations on liability apply.

Patent Statement: The Exegy Ticker Plant is protected in part by the following patents: US 6,711,558; US 7,139,743; US 7,181,437; and US 7,552,107. Other patents pending.

System Specifications

Forward Compatibility:

The C-based API is currently available for the following operating systems:

- » **Windows:** 32 or 64 bit. Windows XP and Windows 2003 R2 Server.
- » **Linux:** 64 bit only. Red Hat Enterprise Linux 4/5 or SuSE Linux Enterprise Server 10SP1.
- » Exegy can also customize the API for other operating systems

Connectivity and Integration:

The Exegy appliance supports a variety of network interconnects, including:

- » For Exchange Feeds a choice of:
 - Four 1 Gig Ethernet RJ-45 interfaces
 - Two 10 Gig Ethernet SFP+ interfaces
- » Multiple 10/100/1000BaseT RJ-45 Ethernet interfaces for management and monitoring support
- » Two 10G Ethernet interfaces for client connections
- » 10 Gig Ethernet with SFP+ connectors

Technical Specifications

Exegy Ticker Plant

- » 2U Form Factor
- » 445x89x762 mm (17.5 x 3.5 x 30 in)
- » 29.5 kg (65 lbs)

Power & Heat Dissipation

- » 110~220 VAC auto-sensing
- » 900 Watts Max
- » 825 Watts Idle

Temperature & Cooling

- » Operating: 10°C-25°C
- » Storage: 70°C max

For more information, contact us at sales@exegy.com or 877.247.5534.

www.exegy.com

